

step in to a *brand new* pre-built suite



and step out to a  
private terrace



# 368 ninth

10<sup>th</sup> floor move-in ready pre-built | 17,494 rsf

*pre-built* | gallery

368<sup>ninth</sup>



368ninth.com

**nuveen**  
REAL ESTATE

**Brian S. Waterman**  
*Executive Vice Chairman*  
t 212-372-2299  
brian.waterman@nmrk.com

**Scott J. Klau**  
*Vice Chairman*  
t 212-372-2244  
scott.klau@nmrk.com

**Erik S. Harris**  
*Executive Managing Director*  
t 212-372-2105  
erik.harris@nmrk.com

**NEWMARK**

*pre-built* | gallery

368<sup>ninth</sup>



368ninth.com

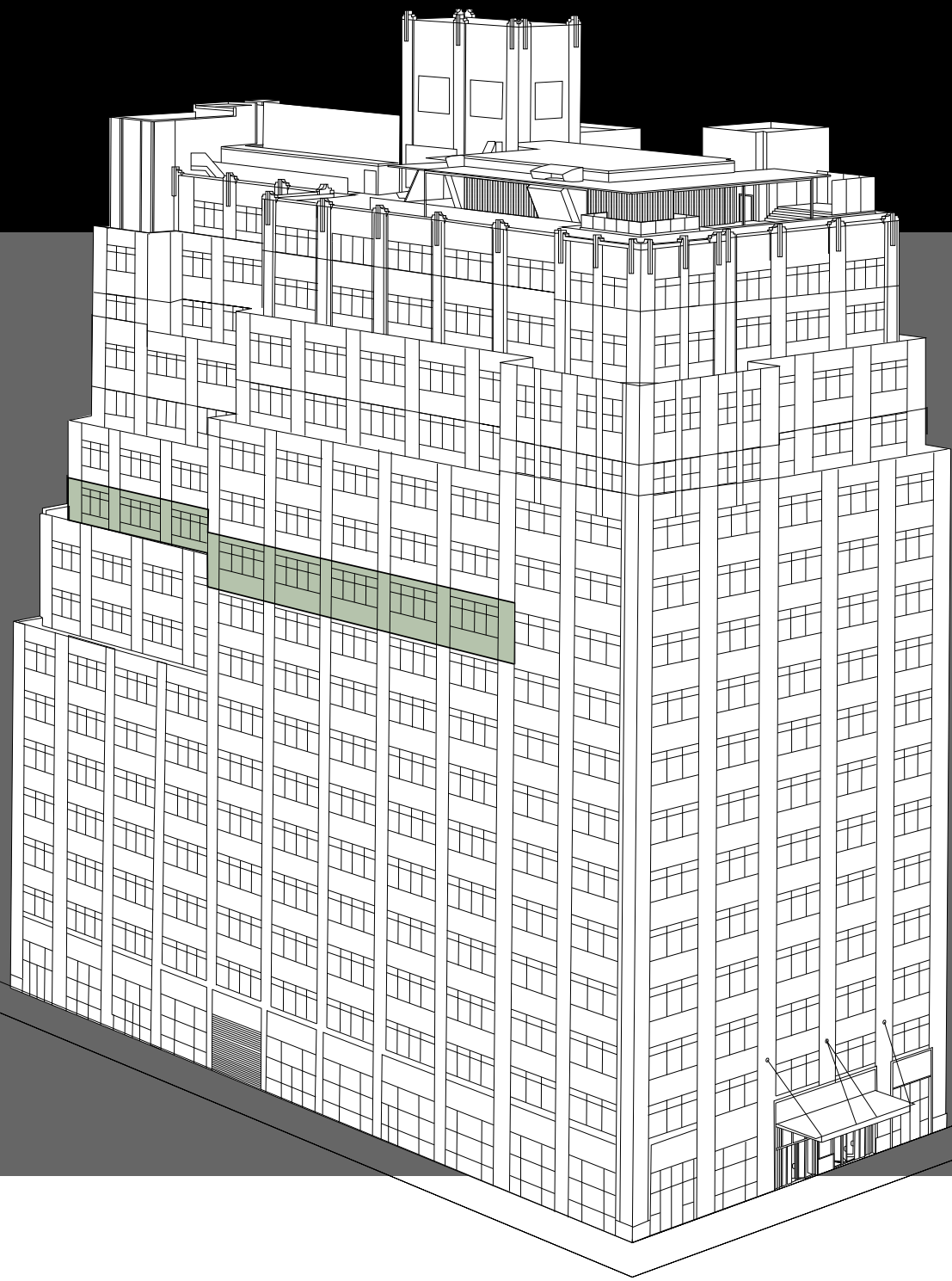
**nuveen**  
REAL ESTATE

**Brian S. Waterman**  
*Executive Vice Chairman*  
t 212-372-2299  
brian.waterman@nrmk.com

**Scott J. Klau**  
*Vice Chairman*  
t 212-372-2244  
scott.klau@nrmk.com

**Erik S. Harris**  
*Executive Managing Director*  
t 212-372-2105  
erik.harris@nrmk.com

**NEWMARK**



pre-built suite 1000

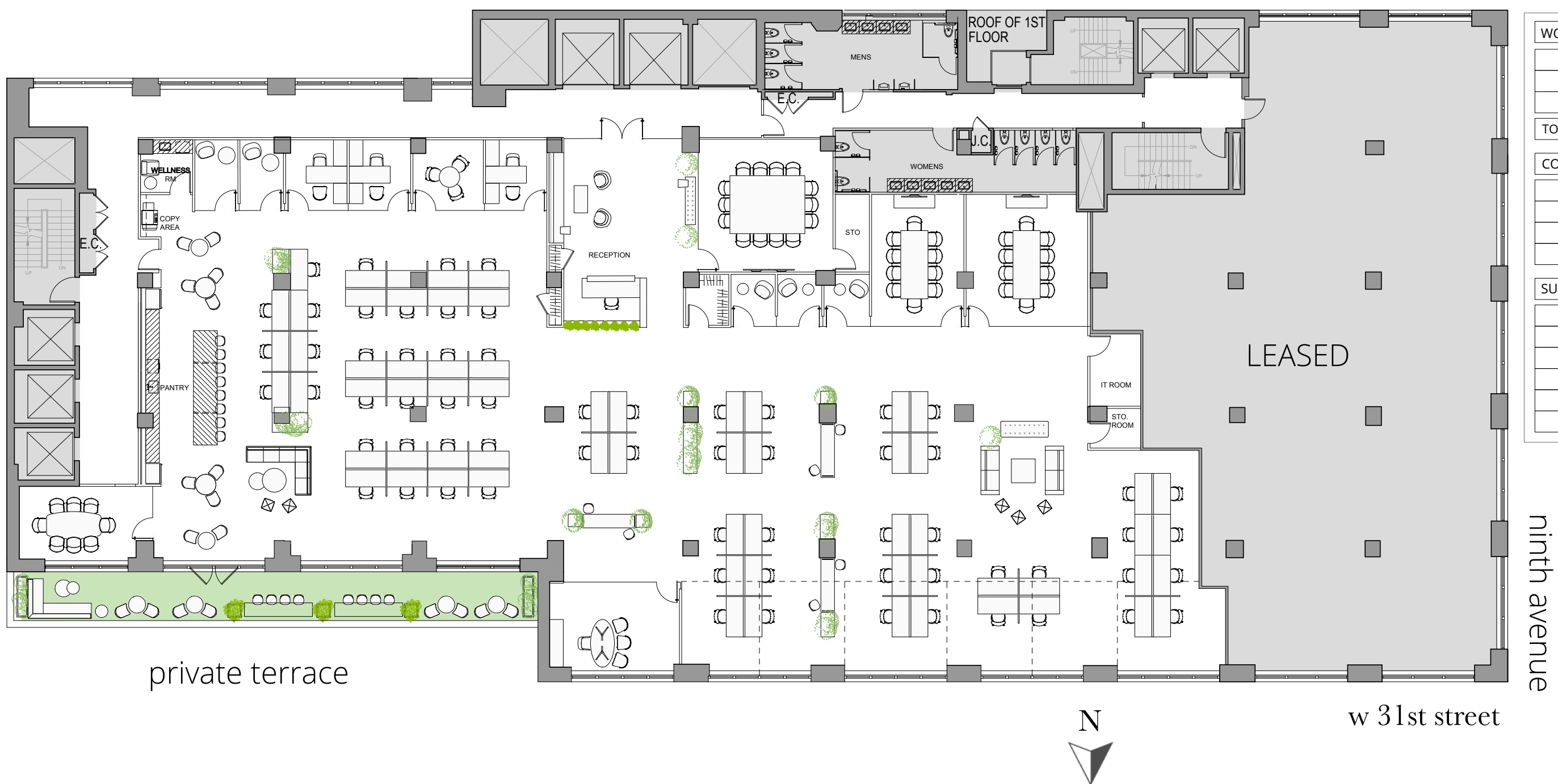
high-end 17,494-rsf  
turnkey opportunity

a fusion of efficiency and elegance, creating a bespoke business environment ideal for the new office experience, featuring:

- an expansive outdoor terrace
- loft-style space w/ wide column spacing
- views overlooking the west side & moynihan station

tenth floor

pre-built plan | 17,494 rsf



legend

WORK SPACE	SEATS
BENCHING	69
PRIVATE OFFICE	3
RECEPTION	1
<b>TOTAL HEADCOUNT</b>	<b>73</b>
COLLABORATIVE SPACE	
BOARDROOM	1
CONFERENCE	2
MEETING ROOM	3
PHONE ROOMS	3
SUPPORT	
PANTHY	1
COAT CLOSET	3
COPY AREA	1
STORAGE CLOSET	2
WELLNESS ROOM	1
IT CLOSET	1

368ninth.com



new tenant rooftop terrace & lounge



stunning skyline & water views



actual photo of new entrance & lobby reception



actual photo of new lobby lounge & fireplace



actual photo of new media lounge & conference space

368ninth.com

**nuveen**  
REAL ESTATE

**Brian S. Waterman**  
Executive Vice Chairman  
t 212-372-2299  
brian.waterman@nmrk.com

**Scott J. Klau**  
Vice Chairman  
t 212-372-2244  
scott.klau@nmrk.com

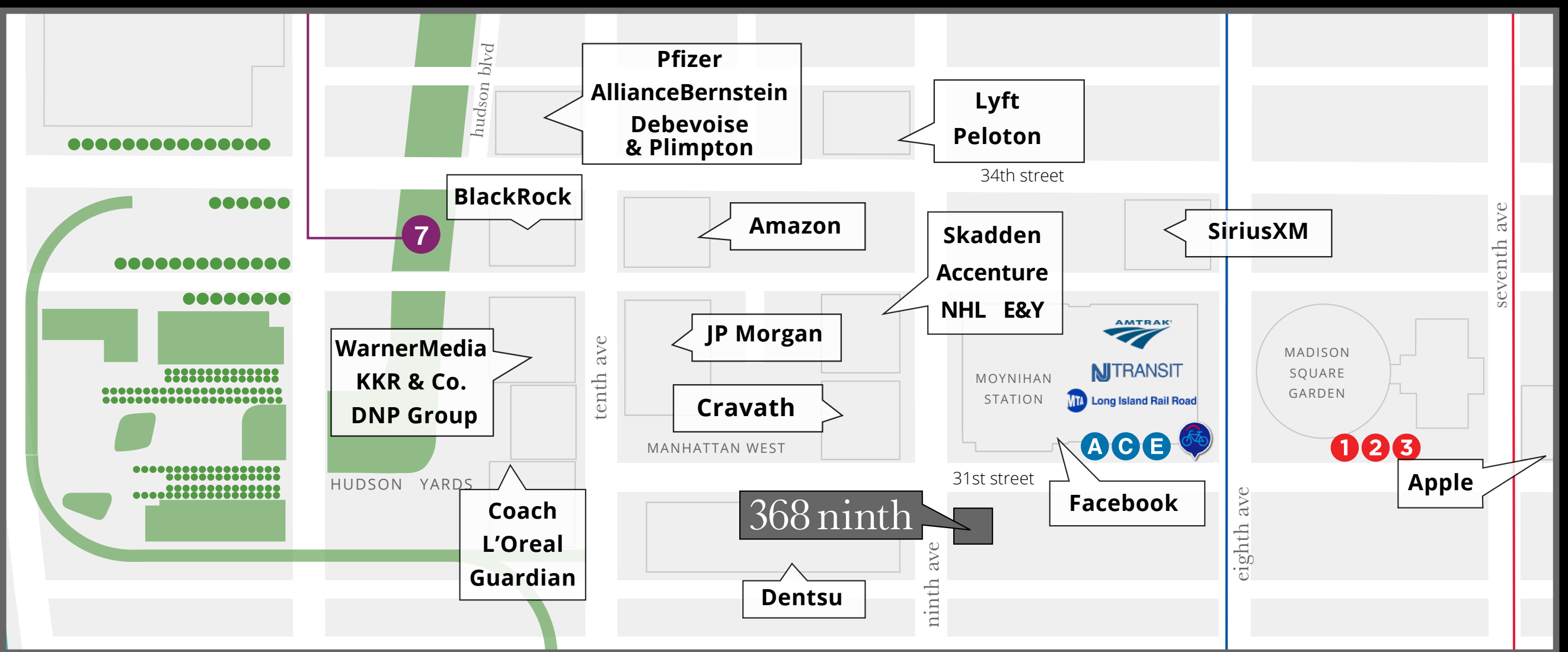
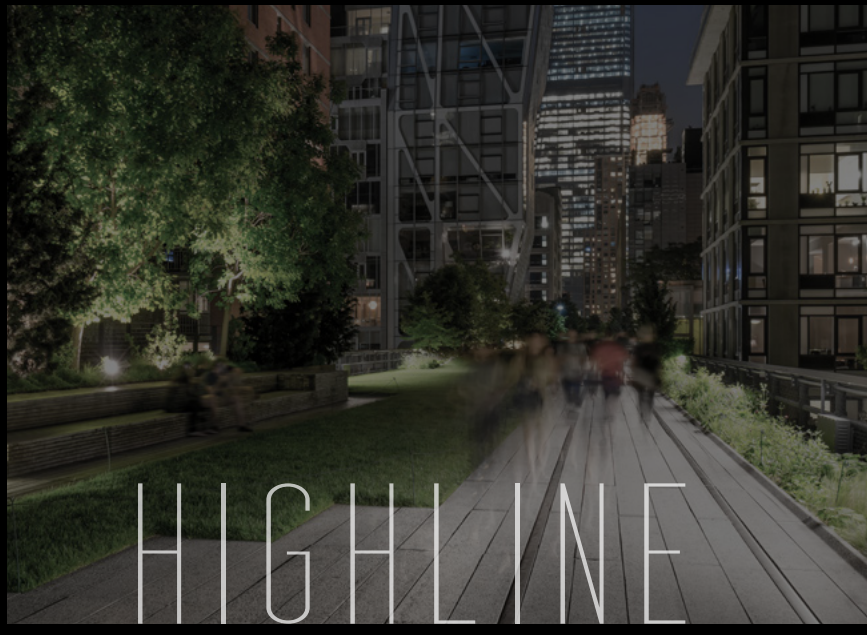
**Erik S. Harris**  
Executive Managing Director  
t 212-372-2105  
erik.harris@nmrk.com

**NEWMARK**

# location | the new west side

# 368<sup>ninth</sup>

center of *perfection*



368ninth.com

**nuveen**  
REAL ESTATE

**Brian S. Waterman**  
Executive Vice Chairman  
t 212-372-2299  
brian.waterman@nrmk.com

**Scott J. Klau**  
Vice Chairman  
t 212-372-2244  
scott.klau@nrmk.com

**Erik S. Harris**  
Executive Managing Director  
t 212-372-2105  
erik.harris@nrmk.com

**NEWMARK**